



PROFACIL
INDUSTRIAL SERVICES PRIVATE LIMITED



A STRONG TEAM CAN
TAKE ANY CRAZY

VISION

AND TURN IT INTO REALITY.



FOUNDER - MD

“TO GIVE REAL SERVICE, YOU MUST ADD SOMETHING
WHICH CANNOT BE BOUGHT OR MEASURED WITH
MONEY, AND THAT IS SINCERITY AND INTEGRITY”



INTRODUCTION

PROFACIL ISPL one of the leading height access and work at heights Brand in the country. Glass Hoppers undertake and provide solutions for the various work at heights services like High Rise Building Paintings, Factory Roof Truss Cleaning & Paintings, Chimney Paintings, Façade maintenance services viz Façade Cleaning, Sealant applications, Replacement of Damaged ACP & Broken Glass and any other work at heights with extreme risks. We provide services without the use of expensive heavy machinery, thereby providing our clients the optimal results within affordable rates. Profacil ispl are a team of exceptionally well trained and seasoned height access professionals, who can skillfully address the various Challenges of work at heights . By relying on professionals well versed at work at height and rope access environments, we tackle the now traditional approach of using dreary height access machineries still popular with our peers, we move in a step closer to achieve what was asked of us by our clients but more spirited and toned to the individuality of our customers.

Roshan B. Marathe (MSW,MBA)
Founder-MD





VISION



To make Your workspace Safe & Enjoy-
full through our innovative products &
Services. Our Services are rendered by
The Expert Professionals, Who Make
sure to Deliver Superior Results Without
Any Mess.

MISSION



Our mission statement is our
commitment to our clients, and it truly
sets us apart from our Others! We don't
just talk about what we do, we actually
do it.



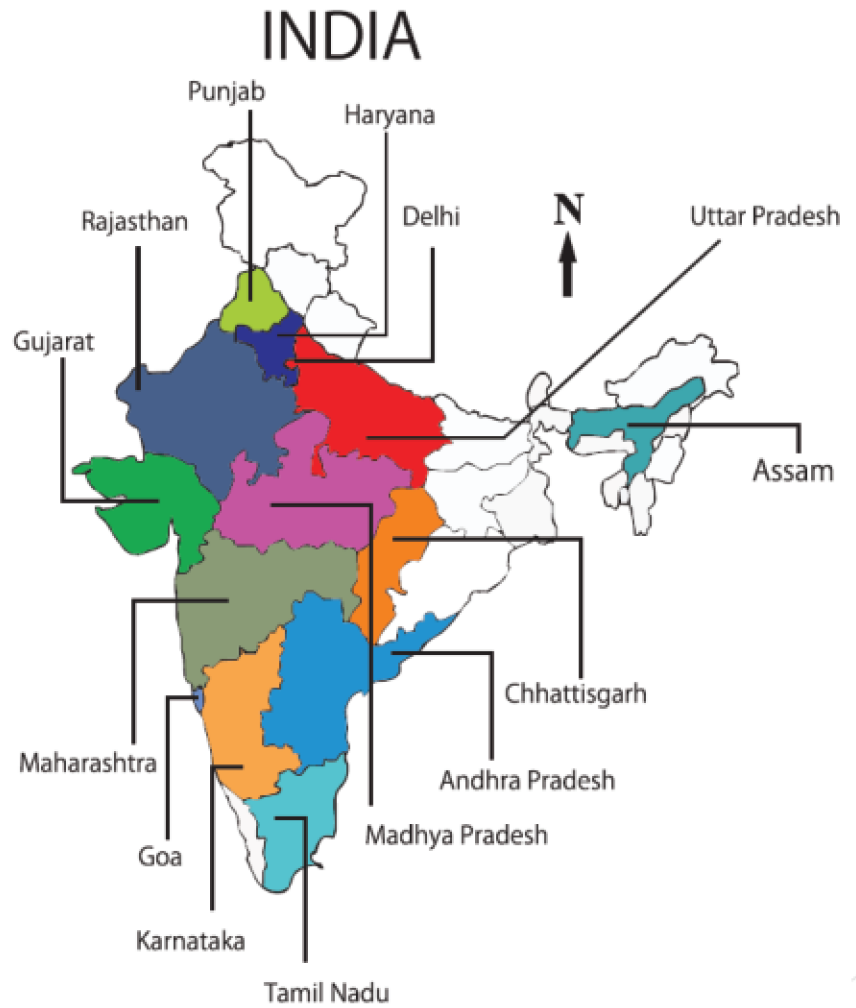


Our Services

- Bird Control (Pigeon, Sparrow, Crow. Etc).
- Industrial Water-Proofing Services.
- High Rise Roof & Structure Cleaning.
(Cobweb Removing , Dry Dusting & Wet Cleaning)
- General Maintenance (MEP).
- Industrial Tank Cleaning (ETP, STP, DIESEL, WATER, CHEMICAL Etc.)
- Industrial & Commercial Floor Deep cleaning.
- High Rise Roof Top Gutters Cleaning
- High Rise Glass (Façade) Cleaning.
- Industrial Pest Control.
- High Rise industrial external & Internal Paintings.
- Industrial Roof Paintings.
- AC, HVAC & CCTV Maintenance.
- Industrial & Commercial HVAC Installation.
- Packaging & Forwarding. -
 - A. Wooden Pallets
 - B. Corrugated Boxes
- PAN India Logistics Services.
- All Kinds of Fabrication Services.
- Factory & Machinery General Maintenance
- Residential and commercial Lift installation & Maintenance
- Environmental Legal Services.
- MPCB & MIDC Liscening Services.
- Industrial Manpower services
- Mechanised Housekeeping services (Regular & Monthly).
- Fire Fighting System

PRESENCE

Andhra Pradesh	Hyderabad, Tirupati.
Assam	Guwahati.
Chhattisgarh	Raipur, Bilaspur.
Delhi	Meerut, Noida, International Airport.
Goa	Mapusa, Panaji, Verna, Tivim, Urse-phonda, Anjuna.
Gujarat	Silvassa, Vapi, Surat, Jamnagar, Vadodara, Ahmedabad, Bharuch, Daman, Mundra, Ankaleshwar, Dahej, Anand, Rajkot, Unjha, Sanand, Savli.
Karnataka	Bengaluru.
Madhya Pradesh	Indore, Waidhan, Dewas, Harda, Itarsi, Sagar, Vidisha, Neemuch, Pithampur, Ujjain.
Maharashtra	Mumbai, Thane, Boisar, Tarapur, Nashik, Pune, Aurangabad, Nagpur, Latur, Satara, Talaja.
Punjab	Chandigarh, Jalander, Amritsar.
Rajasthan	Udaipur, Merta, Jodhpur, Bikaner, Ramganj Mandi, Kota, Sri Ganganagar, Alwar, Bhilwara, Jaipur.
Tamil Nadu	Tirupur, Chennai.
Uttar Pradesh	Agra.
Haryana	Gurgaon.

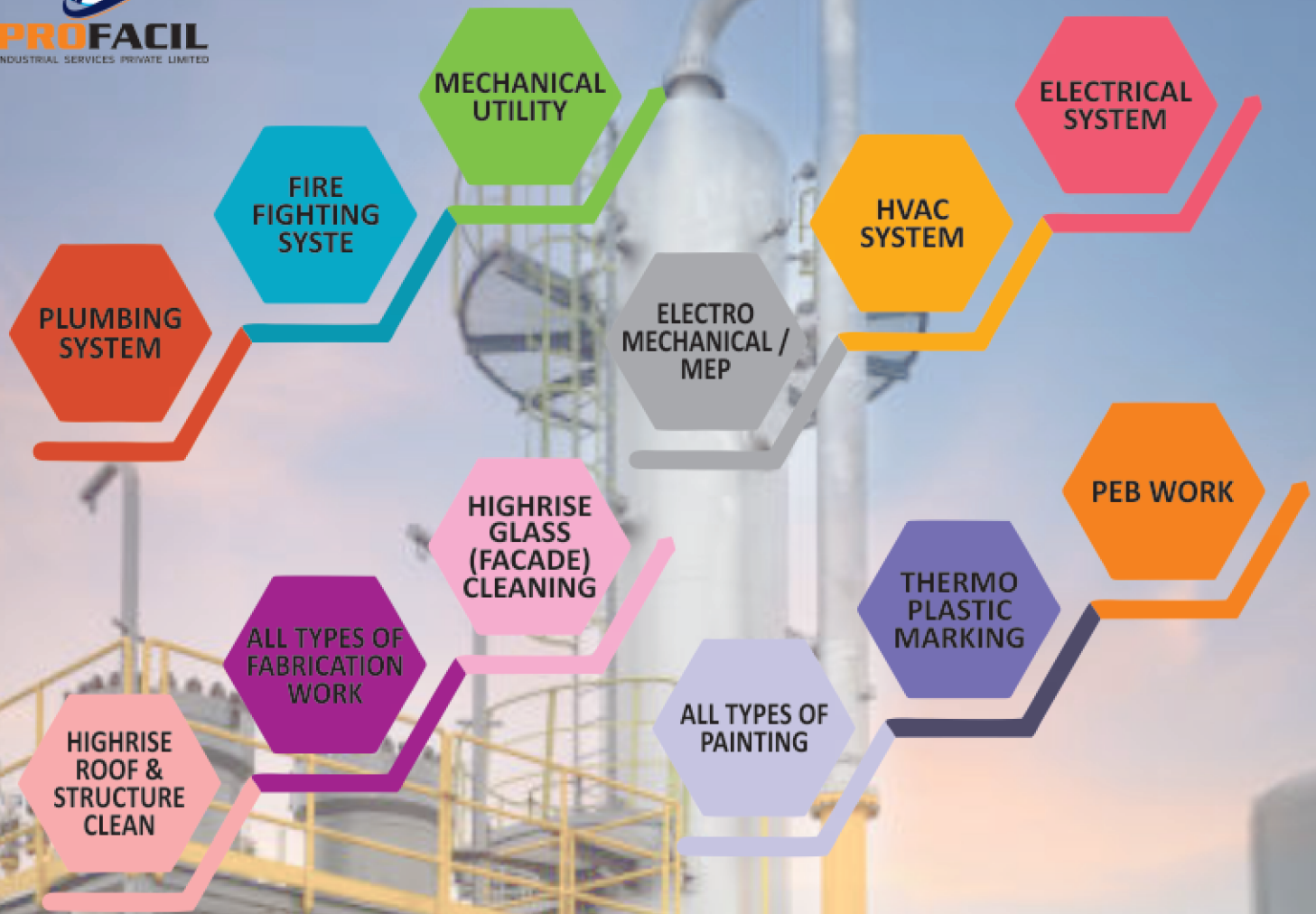


ABOUT

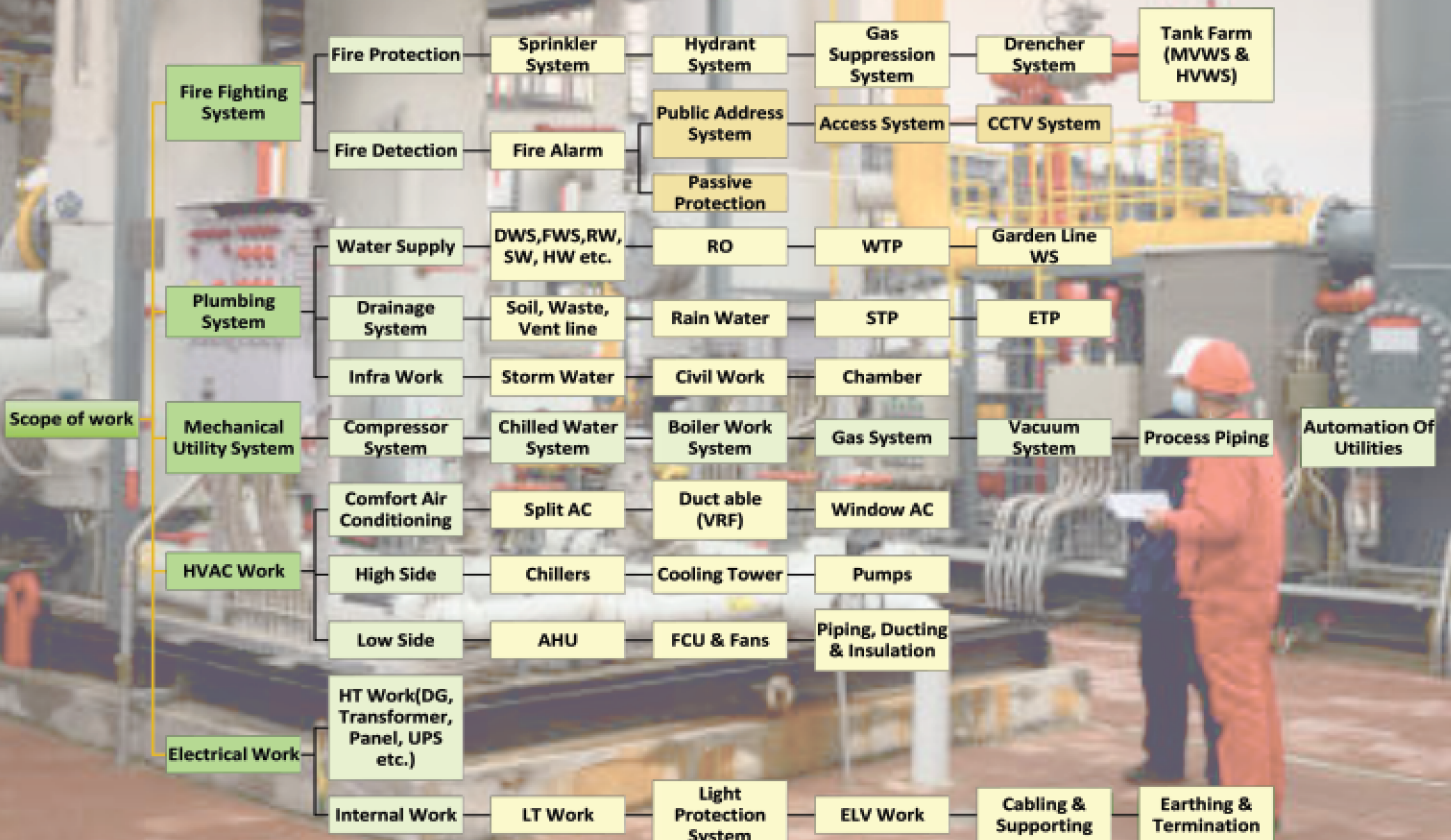
- Established in 2014
- Turnkey Electromechanical contractor having completed more than 700 projects.
- Accredited by "A" rated certification in all categories for Fire Fighting Systems (Protection, Detection & Passive System) by Government of Maharashtra.



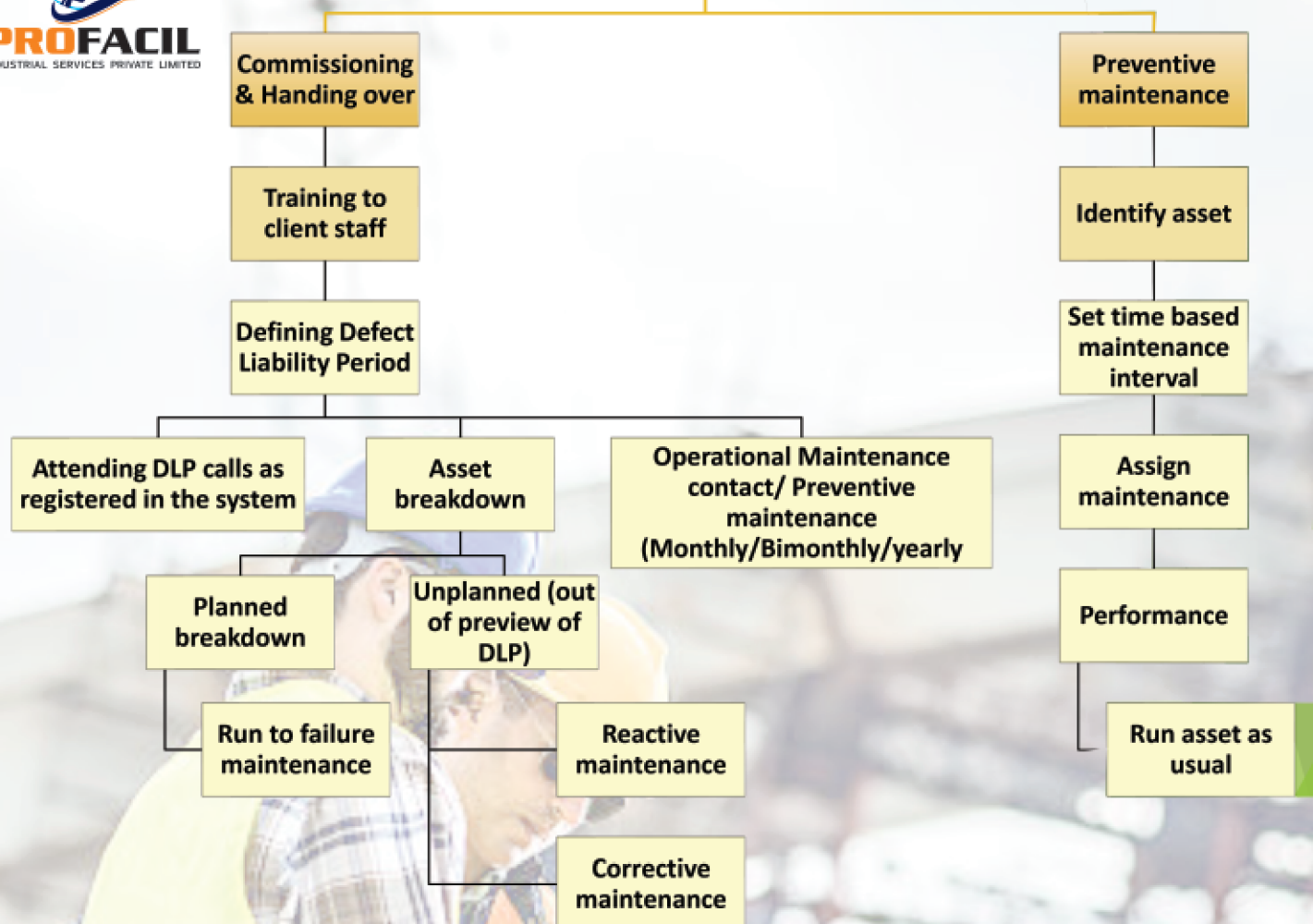
EXPERTISE/SCOPE OF WORK



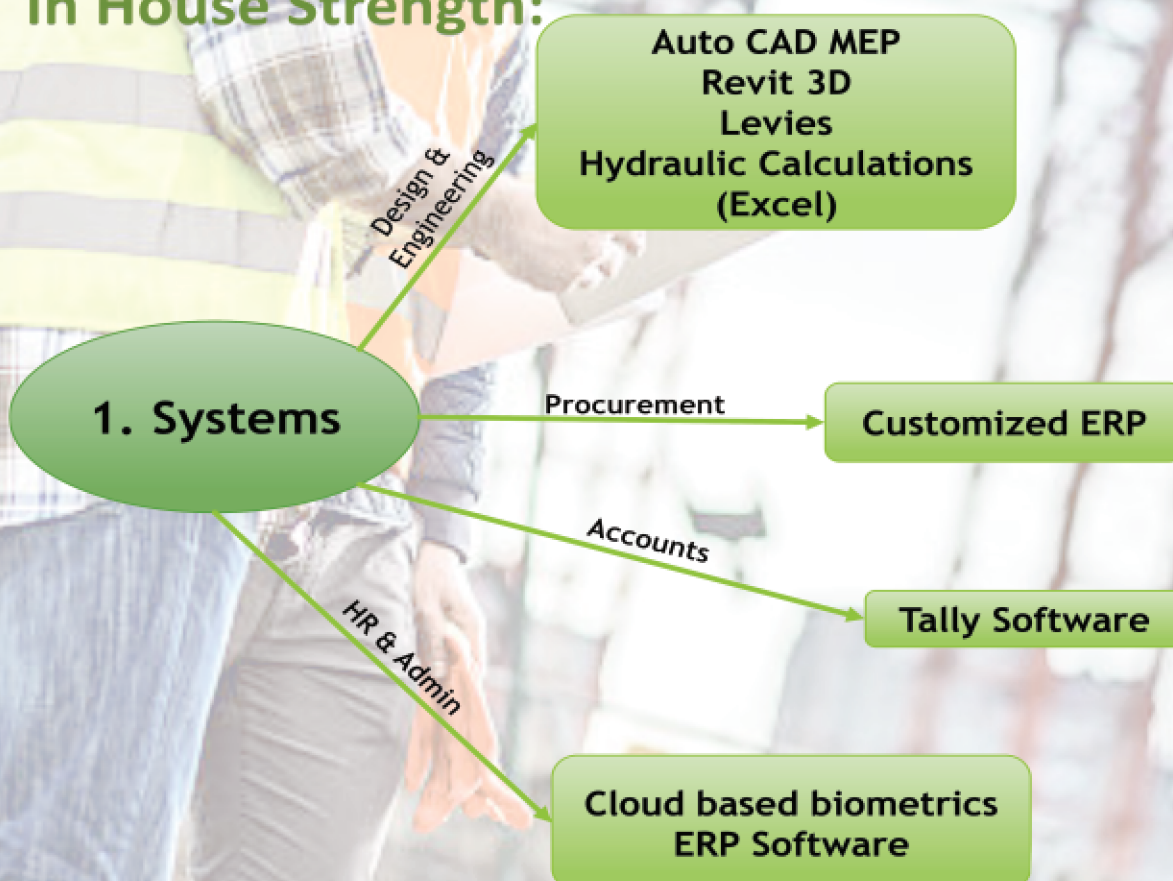
SCOPE OF WORK



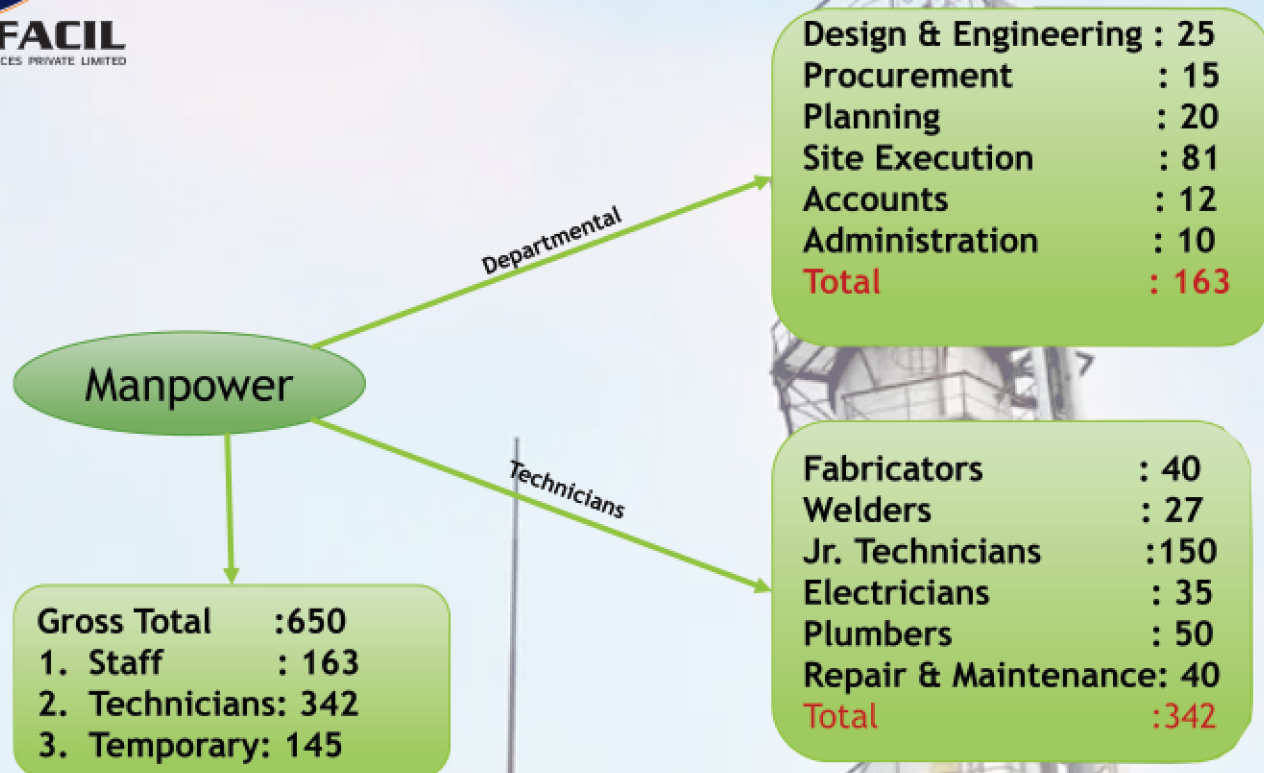
Repair & Maintenance Department



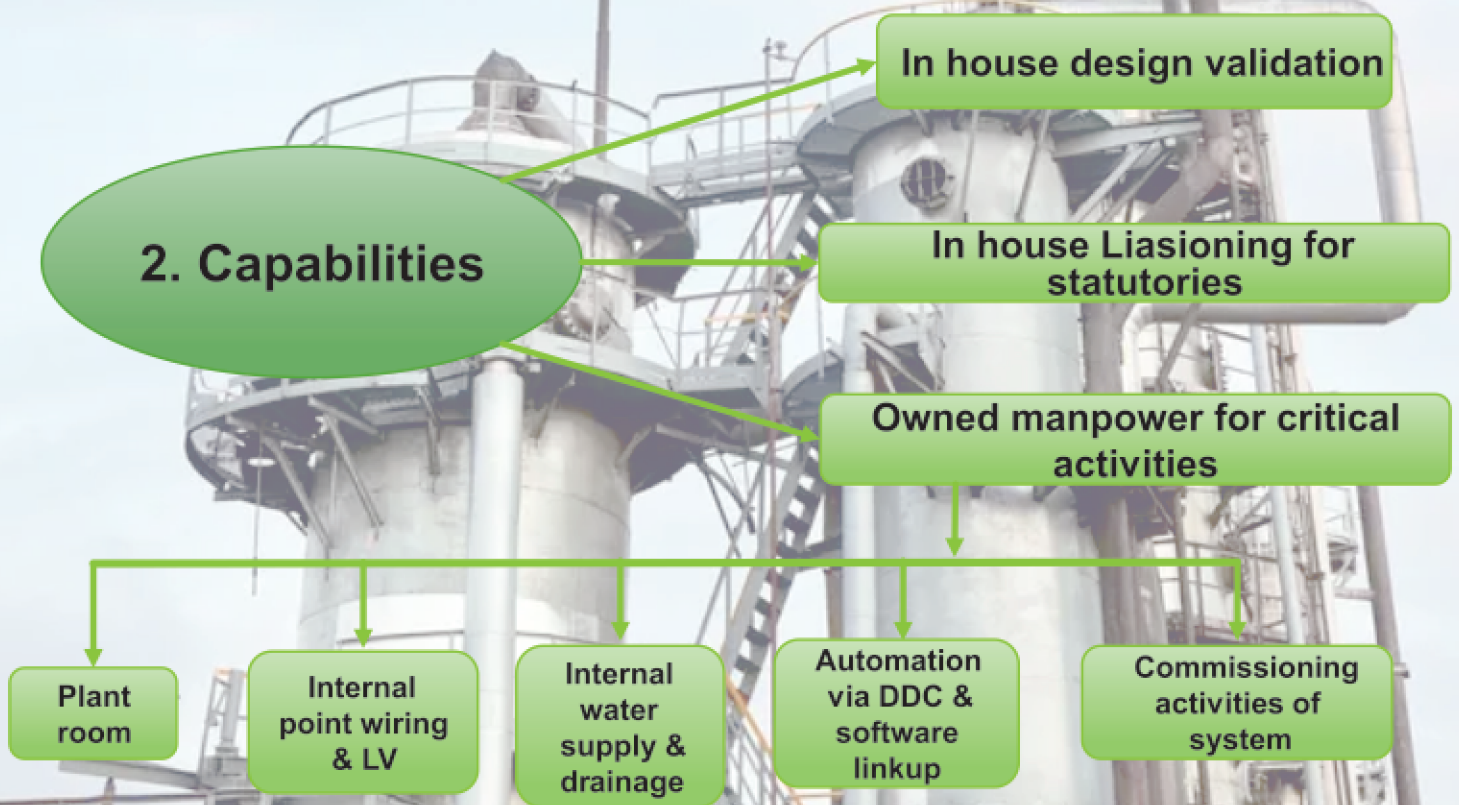
In House Strength:



MANPOWER STRENGTH



2. Capabilities



CLIENTELE



INDUSTRIAL



COMMERCIAL

INDUSTRIAL

KUKDO

Micron

Hirschvogel Group

FDC
FDC Limited

SYNERGY
ENERGY PHARMACEUTICALS CORPORATION (PVT) LTD.

BEXIMCO PHARMA

DATWYLER

LUPIN
PHARMACEUTICALS, INC.

Cinpharm
Le médicament de qualité accessible à tous

DAILY NEEDS

MELWA
MELWIRE ROLLING PVT. LTD.

Morrisons

emami

awp
Army Welfare Product Limited

Stallion
LABORATORIES PVT. LTD.

fbl
Fermenta Biotech Limited

Famy Care Ltd.

Johnson & Johnson

Piramal

OmniActive
HEALTH TECHNOLOGIES

POLYDRUG
LABORATORIES PVT. LTD.

Pfizer

RPG LIFE SCIENCES LIMITED

RB

SHPL
Sunita Hydracolloids Pvt. Ltd.

SIGMA
LABORATORIES PVT. LTD.

SUYOG

Strides

KSPG
Automotive

BOBST

CLIENTELE

FERRERO

alicon
Casting The Future

BEKAERT

ENKEI

SIJCON
CONSULTANTS PVT. LTD.



IFFCO

ITC
ITC Limited

FOSECO

SERUM INSTITUTE OF INDIA
Cyrus Poonawalla Group

Raychem RPG
ENGINEERING GROWTH. PIONEERING EXCELLENCE

PARAKH FOODS

Johnson Controls

साय बाई समूह की ओर

SIEMENS

CP
CANPACK

Schindler

B BERICAP

ELECON
GEARING THE FUTURE

ACG

Kubota

UNO MINDA

Mahindra

TATA

ADITYA BIRLA MEMORIAL HOSPITAL

VW
VOLKSWAGEN

Reliance
Industries Limited
Growth is Life

NRB BEARINGS

unitech

UFLEX

asianpaints

marico

HP

Shapoorji Pallonji

amazon

CANTER
The Best Engineering Under One Roof

Godrej

posco

Valeo

JOTUN

JABIL

ABB

Pyrotek
Improving Performance

AMTEK
DRIVEN BY EXCELLENCE

Forbes Marshall

WILO

MOTHER DAIRY

BAJAJ
Bajaj Electricals Ltd.
Inspiring Trust

MAGNA
COSMA INTERNATIONAL

WOM
WORLDWIDE OILFIELD MACHINE

CLIENTELE



COMMERCIAL CLIENTELE



PEB (PRE ENGINEERED BUILDINGS)

Pre-engineered buildings (PEBs) are structures that are designed, fabricated, and assembled using standardized components and building systems. These buildings are created to meet specific requirements and are typically designed off-site before being transported and assembled at the construction site. Pre-engineered buildings are known for their efficiency, cost-effectiveness, and quick construction time compared to traditional building methods.



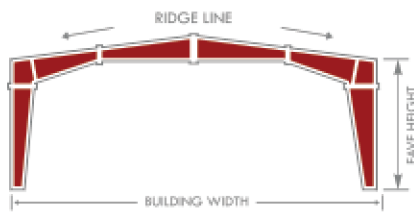
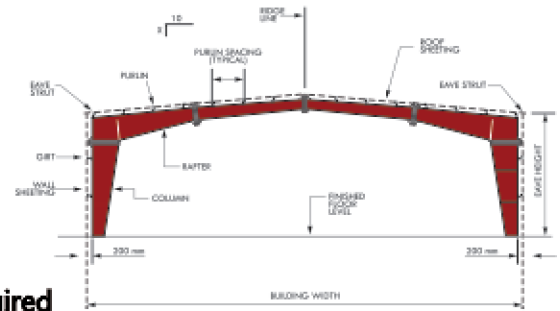
Why to go with PEB ?

- ▷ Standardized components
- ▷ Cost-effectiveness
- ▷ Design flexibility
- ▷ High-quality materials
- ▷ Reduced environmental impact
- ▷ Versatility

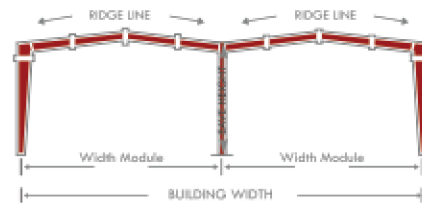
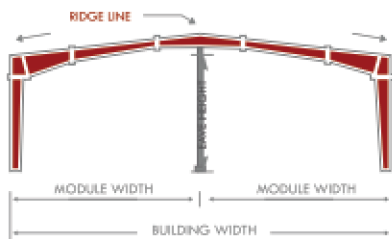
PEB (PRE ENGINEERED BUILDINGS)

The basic parameters that define a pre-engineered building are:

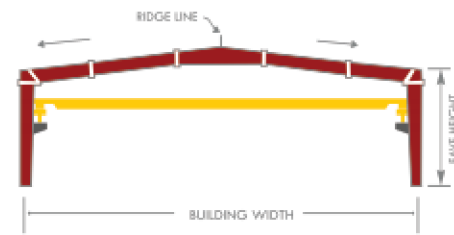
- Building Width
- Building Height
- End bay Spacing
- Design Loads
- Building Length
- Roof Slope
- Interior bay Spacing
- Ancillary service areas required



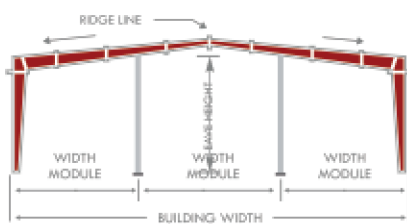
Tapered Column Clear Span (TCCS)



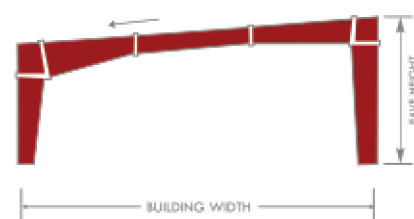
Multi Gable (MG) I / II



Multi Span I



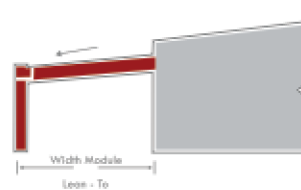
Clear Span with Crane



Multi Span II

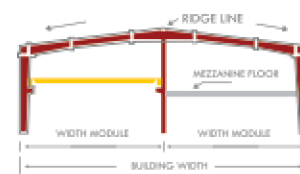


Mono Slope



Multi Span III

Lean - To

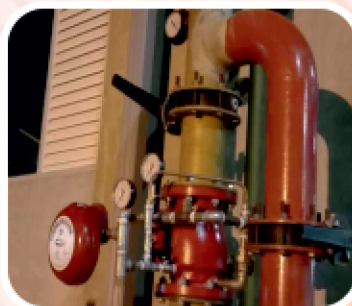
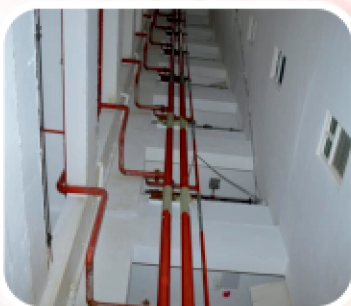


**Multi Span I with
Crane & Mezzanine**

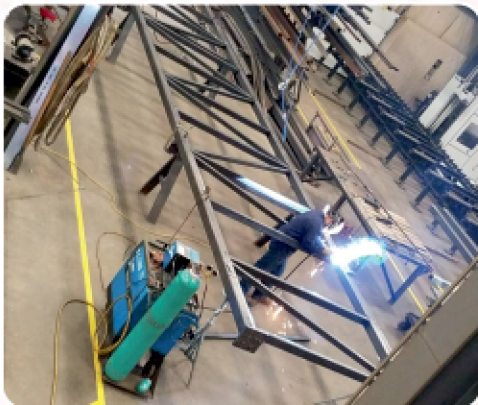
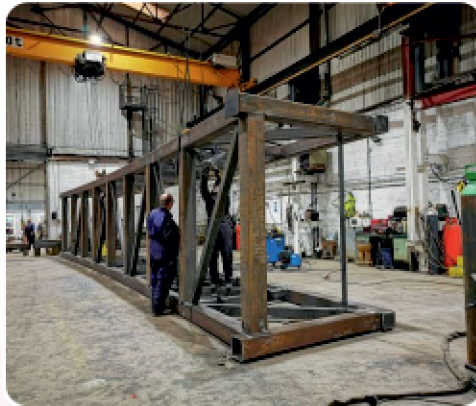
MEP consultants are specialist engineers who provide advice and solutions for building systems, including: heating, ventilation, air conditioning, plumbing, and electrical systems

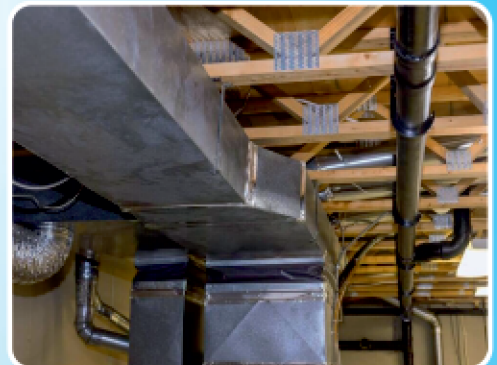


Profacil Industrial Services Private Limited is a market leader in fire fighting systems, including fire detection, protection, suppression and fire control products. We are experts in our field, and that trust is reinforced by the quality we instill in everything we execute. We are in Fire Protection field since from 2015, it has vast experience from basic foundations of Fire Safety to state of the art integrate..

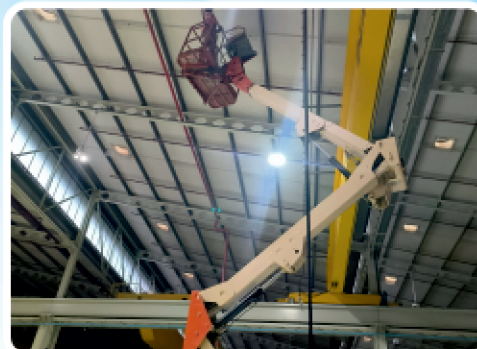
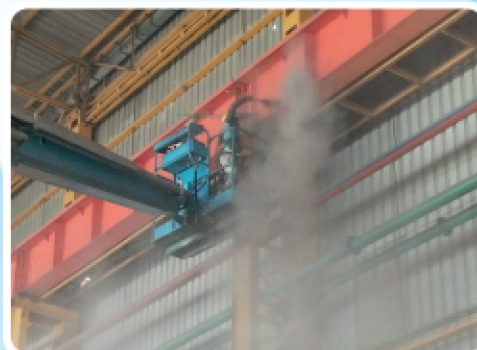
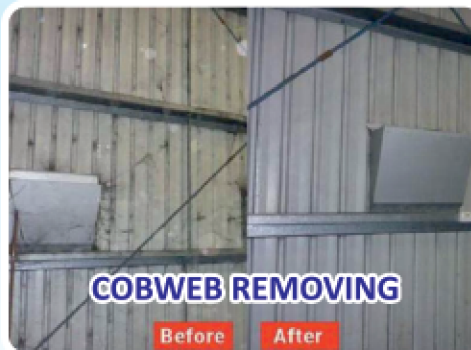


ALL TYPES OF FABRICATION WORK





HIGHRISE ROOF & STRUCTURE CLEANING



ALL TYPES OF PAINTING WORK



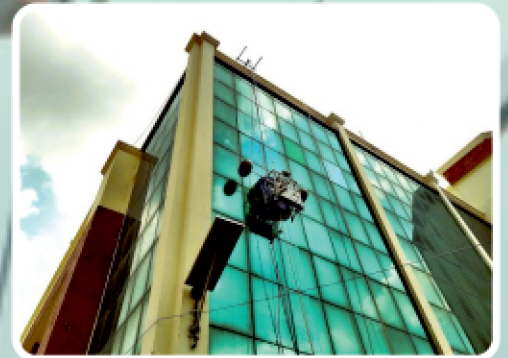
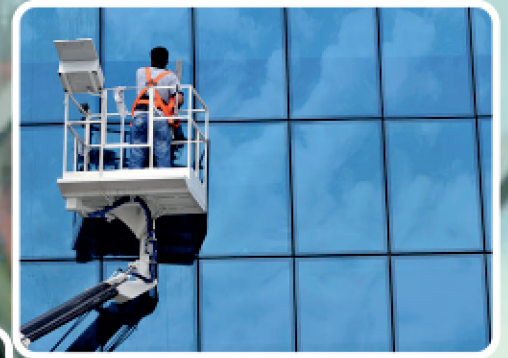
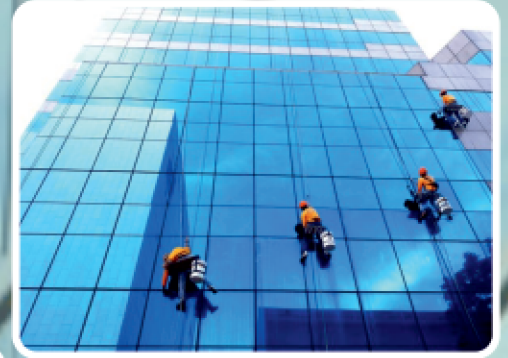
ALL TYPES OF PAINTING WORK



EPOXY COATING AND THERMOPLASTIC ROAD MARKING



HIGH-RISE FACADE (GLASS) CLEANING SERVICES





SCAFFOLDING STANDARDS

Scaffolding standards, Inspection & tagging system is being followed.



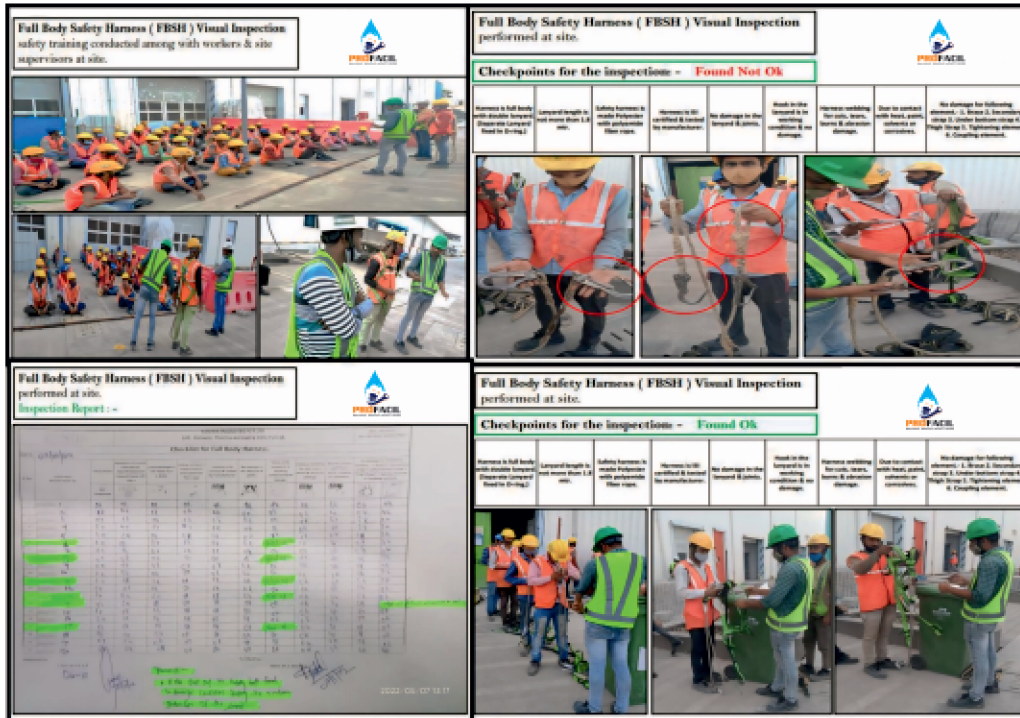
SCAFFOLDING STANDARDS

Red tag is being displayed when scaffolding is not in use or being erected or modified.



Full Body Safety Harness

Awareness training & Detailed inspection performed, Scraped damage FBSH.

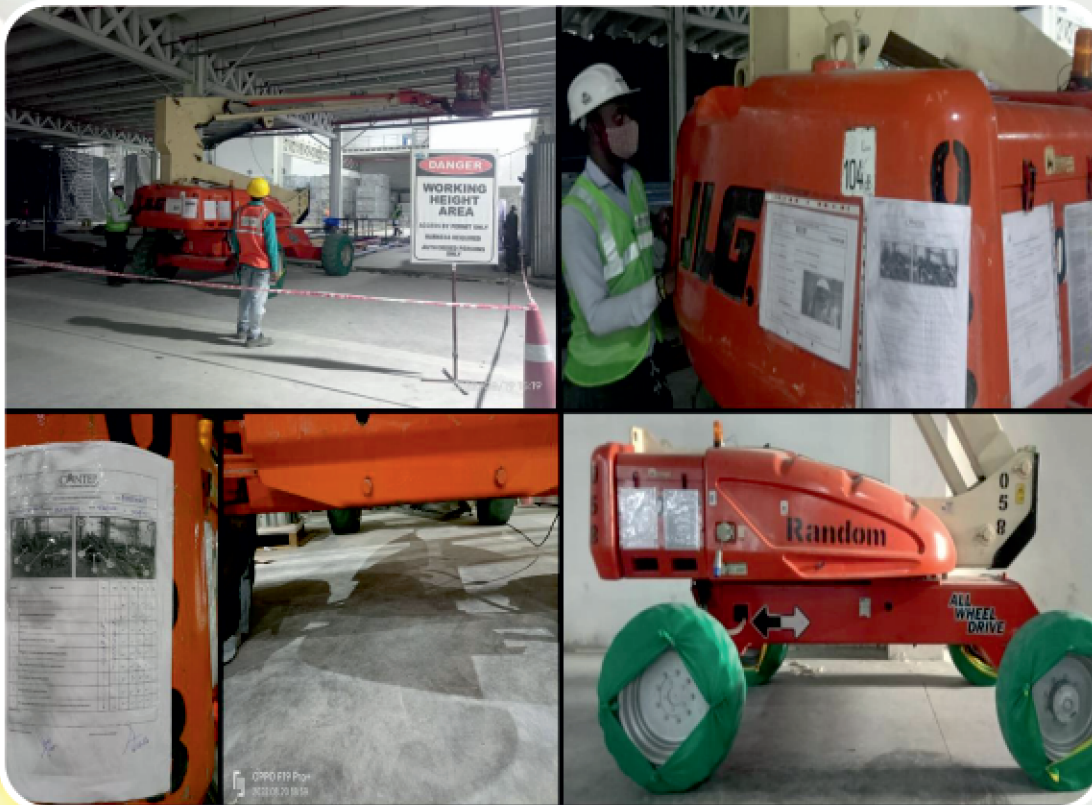


AWEARNNESS TRAINING- Awareness & Job specific trainings are being conducted with staff & Workers on every Saturday.

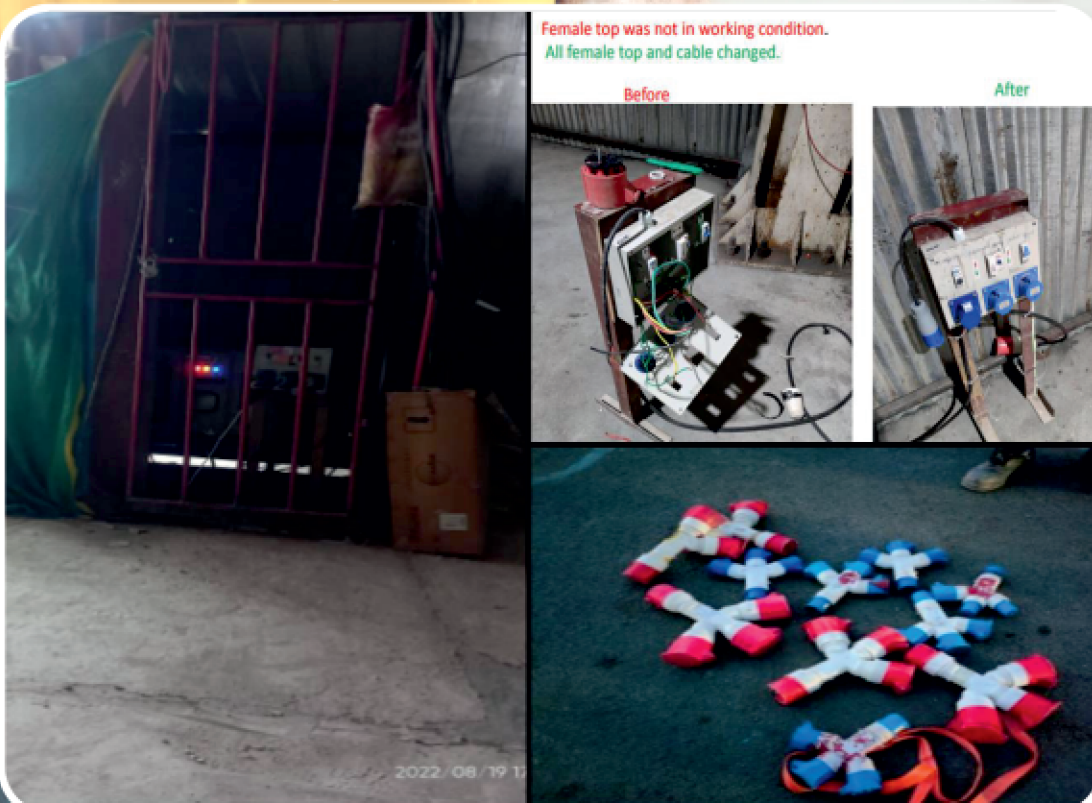


BOOM LIFT

Operator details, Required Legal documents are displayed on the boom lift, Daily checklist is being followed & inspection and Oil leakage is being checked on daily basis.



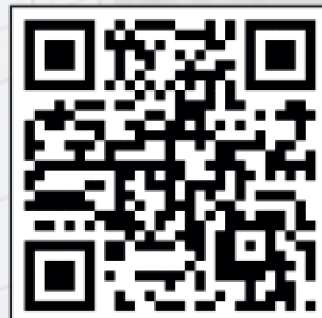
ELECTRICAL COMPLIANCE : We have removed all Y sockets, which was being used to take multiple connections, Checked Physical conditions of temporary extension boards or electrical panel. Access is cleared for all Electrical panels.





GET IN TOUCH

Pune Office Add : Silver central , Second floor,
office no.07, Behind MNGL CNG Pump,
Jadhavwadi, Chikhali,
Pimpri-Chinchwad, Maharashtra, Pune-412105.



GET IN TOUCH

Mumbai Office Add : C-108, Eastern Business
District, Lal Bahadur Shastri Marg,
Mumbai, Maharashtra 400078

Contact : 9730089898 / 9028399898

✉ : enquiry.profamil2023@gmail.com | profamilspl@gmail.com | 🌐 : www.profamil.in

GST IN : 27AANCP2098R1ZD